

# Exhibit 2

Catalog of campaign  
literature referenced in  
Exhibit 1.



# Alan Oberloh

An independent-minded **businessman and civic leader** who's earned a reputation for finding solutions that **work.**



*A businessman who understands how to improve the economy and build good-paying jobs.*

Al has owned and operated Quality Auto Body in Worthington for 29 years, is a member of the Chamber of Commerce, and serves as ex-officio member of the Worthington Regional Economic Development Commission.

As our Senator, Al Oberloh will work across the aisle to streamline and reduce regulations, help new businesses, invest in modern infrastructure and build development in Southwest Minnesota.



*A recognized leader who stands up for Greater Minnesota*

Alan Oberloh has been Mayor of Worthington since 2003, and served on the school board working with legislators in both parties for rural Minnesota cities.

Last year, cuts to towns in Greater Minnesota were double what they were in the metro area. **That's wrong.** Al Oberloh will work hard to ensure that taxes and expenditures are fair for Southwest Minnesota.



*Getting the job done right - the first time.*

Alan knows that partisan "my-way-or-the-highway" tactics are great at grabbing headlines, but they just don't get the job done. Last year's shut down and special session are a prime example.

Alan Oberloh will be an **independent** voice for the nine counties that make up the new Senate District 22. We need guys like Al to end the gridlock in St. Paul and get the job done right - the first time.





# Vicki Jensen

*If you're tired of politicians who are only out to make a name for themselves, vote for someone who's earned a reputation for finding solutions that work.*

Non-Profit  
Organization  
U.S. Postage  
PAID  
38 PAUL, MISS  
Permit No. 2947

Independent expenditure prepared and paid for by the Minnesota U.S. Fund, Inc. 10/12/16. Check www.dflsc.com for additional information.



*Sensible solutions begin with sensible people.*

**Vicki Jensen**  
FOR STATE SENATOR

CONFIDENTIAL

DFLSC000109

Jensen Bio Piece Side One

# Vicki Jensen

*If you're tired of politicians who are only out to make a name for themselves, vote for someone who's earned a reputation for finding solutions that work.*



***A businesswoman who understands how to improve the economy and build good-paying jobs.***

Vicki Jensen operates a successful insurance agency with her husband Trevor in Owatonna. She is active in her local Chamber of Commerce.

As our Senator, Vicki will work with *all* sides to streamline and reduce regulations, help new businesses, invest in modern infrastructure and build development in Greater Minnesota.



***A school leader who works for innovation and student achievement.***

A member of the Owatonna School Board, Vicki works to make sure tax dollars are spent wisely and students get the best education possible.

She champions researched, prudent and proven methods to improve student achievement.

As our Senator, Vicki will make sure that our area gets its fair share of state funding, for effective methods of evaluating teachers, and for greater collaboration between schools, businesses, universities and vocational schools.



***Making state government more efficient and effective.***

"Bull-in-the-china-shop" tactics are great at grabbing headlines, but they often fail.

Vicki Jensen will put private-sector principles to work at the Capitol - reward hard work and foster innovation and good ideas that cut costs and improve efficiency.



## Jensen Bio Piece Side Two



# Tom Saxhaug

An independent-minded **leader** for Northern Minnesota who's earned his reputation for finding solutions that **work**.



## More than just talk about building good-paying jobs.

Tom Saxhaug is a retired insurance agent who served as President of the Grand Rapids Chamber of Commerce. He was elected to the Minnesota Senate in 2002.

As Senator, Tom works with business and labor to build good-paying jobs. This year, he authored the 2012 Environmental Permitting Bill, signed into law by Governor Dayton. It streamlines the environmental review process, helping Minnesota's timber and mining industries develop and grow jobs.

## A recognized leader who stands up for Northern Minnesota.

Last year, Sen. John Carlson voted for cuts to towns that hit Greater Minnesota twice as hard as the metro area. - **resulting in steep recreational property and businesses in Northern Minnesota.** (SF 60; HF 20, 2011 Special Session)

Tom Saxhaug voted against that bill and will continue his fight to ensure that taxes and expenditures are fair and balanced in all areas of the state.



## Getting the job done right - the first time.

Partisan "my-way-or-the-highway" tactics might please party hardliners, but they just don't get the job done. Last year's shut down and special session are a prime example.

Tom Saxhaug stands apart from the partisan fringe at the Capitol. We need more guys like Tom to end the gridlock in St. Paul and get the job done right.

## Saxhaug Bio Piece Side Two

# Jim Carlson's plan to engineer a Minnesota comeback.

## IN ST. PAUL, JIM WILL FOCUS ON:

- ★ **Creating a strong economic infrastructure** that includes research and development, scientific innovation, and business expansion.
- ★ **Investing in education** to create a workforce ready to compete for the jobs of tomorrow in the global market.
- ★ **Protecting Minnesota's world-class healthcare system** and expanding access to affordable healthcare for Minnesotans.

Jim Carlson is ready to engineer more Minnesota jobs.  
Vote Jim Carlson for State Senate Tuesday, November 6. [www.carlsonforsenate.org](http://www.carlsonforsenate.org)

Nonpartisan  
No Party  
No Affiliation  
No Labels



Jim Carlson is ready to engineer more Minnesota jobs.  
Vote Jim Carlson for State Senate Tuesday, November 6. [www.carlsonforsenate.org](http://www.carlsonforsenate.org)

Minnesota Democrats - Former Labor Party  
St. Paul, MN 55107

This is independent expenditure. We do not accept any money from or for any candidate or campaign or for any political party.  
Prepared and posted by the Minnesota DFL Party, 250 E. Plaza Blvd., St. Paul, MN 55107  
Not authorized by any candidate or campaign committee.

CR12\_001



**Jim Carlson.**  
Ready to engineer a Minnesota comeback.



**Jim Carlson** began his career turning technology into jobs.

### LOCAL ROOTS

Jim grew up on a farm in Egan and graduated from Rosemount High School. Jim and his wife, Gayle, who teaches German at Egan High School, have lived in Egan with their two children since 1975.



### PROMOTING TECHNICAL EDUCATION

Jim visited local classrooms with the 3M Visiting Wizards and 3M TECH programs. He encouraged students to explore technical and vocational education to prepare them for the jobs of tomorrow.



### ENGINEERING JOBS

Jim worked in engineering and manufacturing management positions at both Ecolab and 3M. He spent his career turning technology into jobs.



JIM CARLSON

**Jim Carlson is ready to engineer more Minnesota jobs.**

Vote Jim Carlson for State Senate Tuesday, November 6.  
[www.carlsonforsenate.org](http://www.carlsonforsenate.org)

CR 12\_001





**Jim Carlson has a plan to jump-start our local economy.**

Minnesota Democratic-Farmer-Labor Party  
255 E. Plath Blvd.  
St. Paul, MN 55107

Non-profit Org  
U.S. Postage  
Paid  
19G

**Jim Carlson** will prepare our kids for the technology-driven jobs of tomorrow.

**JIM WILL RESTORE THE \$2.1 BILLION  
REPUBLICANS CUT FROM OUR SCHOOLS TO:**

- ★ Upgrade technology in our local classrooms. Minnesota received a D grade in classroom technology.<sup>1</sup>
- ★ Create smaller class sizes. Minnesota schools are ranked near the bottom at 47<sup>th</sup> in elementary school class size.<sup>2</sup>
- ★ Prepare students for the technical careers of tomorrow.

Check the Facts: 1. 2009 Technology Counts State Report; 2. National Center for Education Statistics

**Jim Carlson is ready to engineer more Minnesota jobs.**  
Vote **Jim Carlson** for State Senate, Tuesday, November 6.  
[www.carlsonforsenate.org](http://www.carlsonforsenate.org)

CR12\_002 | This is an independent expenditure, not approved by any candidate, nor is any candidate responsible for it. Prepared and paid for by the Minnesota DFL Party, 255 E. Plath Blvd, St. Paul, MN 55107. Not authorized by any candidate or candidate's committee.

CR 12\_002



**Jim Carlson** knows small businesses need employees with the skills for the jobs of tomorrow.

**Jim Carlson** will arm future employees with the tools of tomorrow.

Jim knows local businesses can only compete with a highly educated workforce. His plan will build them one.



**JIM WILL RESTORE THE \$2.1 BILLION REPUBLICANS CUT FROM OUR SCHOOLS TO:**

- ★ Upgrade technology in our local classrooms. Minnesota received a D grade in classroom technology.<sup>1</sup>
- ★ Create smaller class sizes. Minnesota schools are ranked near the bottom at 47<sup>th</sup> in elementary school class size.<sup>2</sup>
- ★ Prepare students for the technical careers of tomorrow.

Check the Facts: 1. 2009 Technology Counts State Report. 2. National Center for Education Statistics.



**Jim Carlson is ready to engineer more Minnesota jobs.**  
Vote **Jim Carlson** for State Senate, Tuesday, November 6.

[www.carlsonforstate.com](http://www.carlsonforstate.com)

CR 12\_003

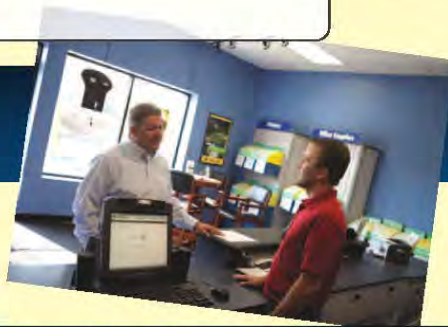


Kevin Dahle isn't going to let Minnesota receive a D grade in classroom technology again.

Minnesota Democratic-Farmer-Labor Party  
255 E. Plato Blvd.  
St. Paul, MN 55107

Non-profit Org.  
U.S. Postage  
Paid  
TPG

Kevin Dahle's plan makes our kids competitive in the job market and gets Minnesota moving.



Kevin Dahle's Plan to Get Minnesota Moving:

- ★ Restore the \$2.1 billion cut by Republicans from our schools.
- ★ Invest in smaller class sizes.
- ★ Work with businesses to develop a classroom curriculum that incorporates technology that has real world applications.

Vote Kevin Dahle for State Senate November 6.

★ [www.KeinDahle.net](http://www.KeinDahle.net) ★

Check the Facts: 1. 2009 Technology Counts State Report.

Minnesota received a D grade in classroom technology.<sup>1</sup>  
Kevin Dahle knows we can do better.

★ ★ **Kevin Dahle** FOR STATE SENATE  
Focused on Minnesota families, not political points.

KDL12\_003 

This is an independent expenditure, not approved by any candidate, nor is any candidate responsible for it. Prepared and paid for by the Minnesota DFL Party, 255 E. Plato Blvd, St. Paul, MN 55107. Not authorized by any candidate or candidate's committee.

KDL 12\_003



Kevin Dahle's plan: Build jobs and communities.

Minnesota Democratic-Farmer-Labor Party  
 255 East Plato Blvd.  
 St. Paul, MN 55107  
 KDL12\_004

**Kevin Dahle FOR STATE SENATE**  
 Focused on Minnesota families, not political points.

Non-profit Org  
 U.S. Postage  
 Paid  
 TPG

★ ★ ★ Kevin Dahle has a plan for stronger communities and better jobs. We can't afford to wait.

Businesses need infrastructure, and our hard-hit families need work. That's why Kevin Dahle has a plan to get things moving.

- ★ **Repair roads and bridges** along the 35W and Highway 169 corridors.
- ★ **Fix water and sewer systems** to save money.
- ★ **Prioritize infrastructure repairs** because they get more expensive the longer you wait.
- ★ **Promote bioenergy research** to develop fuels that help our agriculture industry.

Vote Kevin Dahle for State Senate November 6 ★ [www.KevinDahle.net](http://www.KevinDahle.net)

This is an independent expenditure, not approved by any candidate, nor is any candidate responsible for it. Prepared and paid for by the Minnesota DFL Party, 255 E. Plato Blvd, St. Paul, MN 55107. Not authorized by any candidate or candidate's committee.

KDL 12\_004

"We, in Greater Minnesota, need to unite in order to preserve what previous generations have built for us and to continue improving the quality of life in Western Minnesota for ourselves and our children." — *Kent Eken*



A Red River Valley family since 1884.

Kent Eken's great-great-grandfather came to the Red River Valley from Norway in 1884. Kent works the fourth-generation Eken farm, where he is raising his children and is active in the community. The Ekens attend Zion Lutheran Church. Kent is a member of the Farmers Union, Farm Bureau, Twin Valley Lions Club, and Ducks Unlimited.



Vote Kent Eken for State Senate  
Tuesday, November 6.

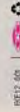
REGISTRATION  
MAIL POSTAGE  
PAID  
301

Minnesota Committee on Election Administration  
255 E. Fifth Street  
St. Paul, MN 55102



Vote Kent Eken for State Senate  
Tuesday, November 6.

This is an independent expenditure, not approved by any candidate, and is not an endorsement or a request for endorsement. It is the property of Kent Eken for State Senate.



**Kent Eken:**  
farmer, teacher, father.



## Kent Eken's roots run deep in Western Minnesota.



**That's why our community comes first.**

The Eken family settled on the Minnesota prairie in 1884.

Kent's great-great-grandfather came from Norway to settle on Minnesota's Red River Valley in 1884. He changed his name from Peterson to Eken, Norwegian for oak tree, to symbolize his hope that the Eken family would grow and prosper here for generations to come.

**Continuing the family tradition.**

Kent and Lori are raising their four children in the farmhouse his great-grandparents built on their fourth-generation Eken farm. The farm taught Kent the value of hard work, and he's passing those values down to his children.

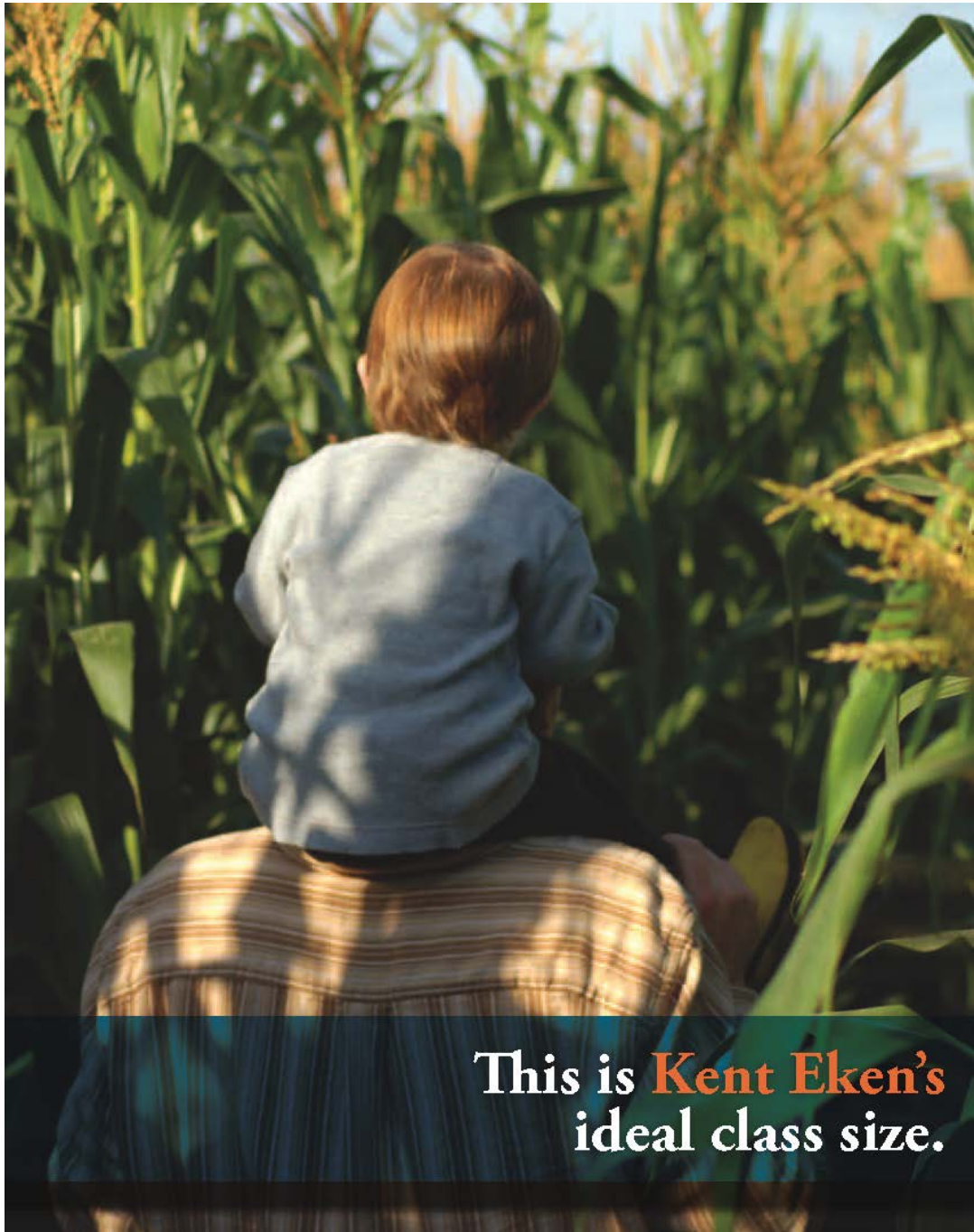
**Doing what it takes.**

A family farmer, sugar beet truck driver, part-time teacher, and legislator, Kent knows what it means to juggle work, family and farm. He has to make the same tough decisions we do, and knows the difference between a good year and a bad year is not much.



Vote Kent Eken for State Senate  
Tuesday, November 6.

EKE 12\_001



This is **Kent Eken's**  
ideal class size.

EKE 12\_003

Minnesota Democratic-Farmer-Labor Party  
255 E. Plato Blvd.  
St. Paul, MN 55107

EKE12\_003 |  

Non-profit Org.  
U.S. Postage  
Paid  
TPG



## Kent Eken won't allow overcrowded classrooms.

His plan makes sure all children get the attention they deserve:

1. Restore the \$2.1 billion Republicans cut from our schools.
2. Cut nonessential state spending to reinvest in smaller class sizes.  
Minnesota schools are ranked near the bottom at 47th in student class size.<sup>1</sup>
3. Invest in technology for classrooms so our children can compete for the jobs of tomorrow. Minnesota receives a D grade in classroom technology.<sup>2</sup>



**Vote Kent Eken *for* State Senate**  
**Tuesday, November 6.**

Check the Facts: 1. National Center for Education Statistics. 2. 2009 Technology Counts State Report.


This is an independent expenditure, not approved by any candidate, nor is any candidate responsible for it. Prepared and paid for by the Minnesota DFL Party, 255 E. Plato Blvd, St. Paul, MN 55107. Not authorized by any candidate or candidate's committee.

EKE 12\_003

Side Two

Minnesota Democratic-Farmer-Labor Party  
255 East Plato Blvd.  
St. Paul, MN 55107

Non-profit Org  
U.S. Postage  
Paid  
TPG



Today's classrooms  
should prepare our kids  
for tomorrow's jobs.

EKE12\_004

This is an independent expenditure, not approved by any candidate, nor is any candidate responsible for it. Prepared and paid for by the Minnesota DFL Party, 255 E. Plato Blvd, St. Paul, MN 55107. Not authorized by any candidate or candidate's committee.



As an educator, Kent Eken  
prepares our kids for the  
jobs of tomorrow.

His plan to cultivate our next crop of workers:

1. Restore the \$2.1 billion Republicans cut from our schools.
2. Cut nonessential state spending to reinvest in smaller class sizes. Minnesota schools are ranked near the bottom at 47th in elementary class size.<sup>1</sup>
3. Invest in technology for classrooms so our children can compete for the jobs of tomorrow. Minnesota received a D grade in classroom technology.<sup>2</sup>



**Vote Kent Eken for State Senate**  
Tuesday, November 6.

Check the Facts: 1. National Center for Education Statistics; 2. 2009 Technology Counts State Report.

EKE 12\_004



“Our state is paralyzed by partisan politics. I plan to reintroduce the idea of compromise to St. Paul. By working together, we can find common ground on taxes, regulation and policies to create a stronger business community in Minnesota.”

**Melisa Franzen**



**MINNESOTANS DESERVE:**

- ★ A world-class education for our children
- ★ Transparency in our government
- ★ Streamlined taxes and regulations
- ★ Access to affordable and quality health care

Minnesota Democratic-Farmer-Labor Party  
255 E. Plato Blvd.  
St. Paul, MN 55107

Non-profit Org.  
US Postage  
PAID  
TPG

PUTTING MIDDLE-CLASS MINNESOTA BACK IN CHARGE.

**Vote Melisa Franzen  
for State Senate**

**NOVEMBER 6**

[WWW.MELISAFRANZEN.COM](http://WWW.MELISAFRANZEN.COM)



MFZ12\_001



This is an independent expenditure, not approved by any candidate, nor is any candidate responsible for it. Prepared and paid for by the Minnesota DFL Party, 255 E. Plato Blvd, St. Paul, MN 55107. Not authorized by any candidate or candidate's committee.



**Melisa Franzen**

A BUSINESSWOMAN WITH GIRL SCOUT ROOTS

MFZ 12\_001 Side One



**MELISA FRANZEN FINDS SOLUTIONS BY BRINGING PEOPLE TOGETHER.**

### MELISA FRANZEN LEARNED TEAMWORK AND VALUES AS A GIRL SCOUT

As a Girl Scout and 4-H member, Melisa learned that true success comes from working together. The Girl Scout mission is to build girls of courage, confidence, and character, who make the world a better place. Franzen carries that mission with her every day, and continues to serve on the Girl Scout Board of Directors for the Minnesota and Wisconsin River Valley.



### A CAREER BUILT ON BRINGING PEOPLE TOGETHER

As an attorney for Target, bringing people together to find solutions is Melisa's full-time job. Her work has been honored with industry awards because Melisa knows that success doesn't have to come at the expense of others.



### PUTTING OTHERS FIRST

Melisa is a lifelong volunteer. Bringing people together to solve community problems is what she does. She spends her free time putting others first and finding solutions that work for everyone. She volunteers with:

- ★ Neighborhood House
- ★ Center for Urban and Regional Affairs
- ★ Centro Legal
- ★ The St. Paul Foundation
- ★ Minnesota Women Lawyers

**Melisa Franzen** SHE PUTS OUR SHARED PRIORITIES FIRST.

**VOTE NOVEMBER 6 • [WWW.MELISAFRANZEN.COM](http://WWW.MELISAFRANZEN.COM)**

MRZ 12\_001 Side Two



# Melisa Franzen

HAS A PLAN FOR SUCCESS  
THAT INVOLVES EVERYONE.

## A fair tax code. Investment in education. Opportunity for everyone.

### MELISA FRANZEN'S PLAN FOR A BETTER MINNESOTA:

- ★ Simplify our tax code, making it easier for business start-ups and entrepreneurs to create jobs here in Minnesota.
- ★ Educate a world-class workforce by restoring the \$2.1 billion cut from our schools.
- ★ Reinstate Homestead Property Tax Credits for families and small businesses while closing unfair corporate tax loopholes.

MELISA FRANZEN WILL PUT MIDDLE-CLASS MINNESOTA  
BACK IN CHARGE.

VOTE

## Melisa Franzen for State Senate

NOVEMBER 6TH

[WWW.MELISAFRANZEN.COM](http://WWW.MELISAFRANZEN.COM)



This is an independent expenditure, not approved by any candidate, nor is any candidate responsible for it.  
Prepared and paid for by the Minnesota DFL Party, 255 E. Plato Blvd, St. Paul, MN 55107. Not authorized by any candidate or candidate's committee.

MFZ 12\_002



**School. Work. Home.**  
Our family priorities  
aren't complicated.



MFZ12\_003 |  

This is an independent expenditure, not approved by any candidate, nor is any candidate responsible for it. Prepared and paid for by the Minnesota DFL Party, 255 E. Plato Blvd, St. Paul, MN 55107. Not authorized by any candidate or candidate's committee.

Melisa Franzen will put our  
priorities back on the agenda.

MELISA FRANZEN'S PLAN FOR A BETTER MINNESOTA:



★ Educate a world-class workforce by restoring \$2.1 billion cut from our schools.



★ Simplify our tax code, making it easier for business start-ups and entrepreneurs to create jobs here in Minnesota.



★ Reinstate our Minnesota Homestead Property Tax Credit for families and small businesses while closing unfair corporate tax loopholes.

Melisa Franzen will put middle-class  
Minnesota back in charge.

**Vote Melisa Franzen  
for State Senate**  
NOVEMBER 6

[WWW.MELISAFRANZEN.COM](http://WWW.MELISAFRANZEN.COM)



MFZ 12\_003

# Laurie McKendry.

A Minnesota success story with a plan for a stronger economy.

Laurie McKendry was raised by a single mother who worked as a waitress to make ends meet. Laurie got her first job at 14 and worked her way through high school and college, graduating with honors and going on to found two Minnesota businesses. Now Laurie has a plan to spur economic growth in the State Senate.

**We can create jobs in Minnesota by:**

- Improving transportation and infrastructure so people can get to work and businesses can get their products to market by **building the SW Corridor rail line.**
- Creating an economic environment where business and entrepreneurship can thrive again.
- Ensuring Minnesotans have access to a world-class education, making Minnesota the "Education State" once again.
- Balancing the budget without making cuts to essential services and our schools.

# Laurie McKendry

A job creator who's ready to work for us.

Vote Laurie McKendry for State Senate on Tuesday, November 6.

[www.McKendryforSenate.org](http://www.McKendryforSenate.org)

Minnesota Democratic-Farmer-Labor Party  
255 E. Park Drive  
St. Paul, MN 55107

NON-PROFIT ORG.  
U.S. POSTAGE  
PAID  
ST. PAUL, MN

# Laurie McKendry

A job creator who's ready to work for us.

MKY12\_001

This is an independent expenditure, not approved by any candidate, nor is it any campaign expenditure of a candidate or political party. It is not subject to the Minnesota Campaign Finance and Election Act. For more information, visit [www.McKendryforSenate.org](http://www.McKendryforSenate.org).

Vote Laurie McKendry for State Senate on Tuesday, November 6.

# Laurie McKendry

is a Minnesota success story.

[www.McKendryforSenate.org](http://www.McKendryforSenate.org)

## That's why she's stepping up for *Minnesota's middle class.*



**Laurie pulled herself up by her bootstraps.**

Laurie was raised by a single mother with a GED who waitressed to provide for her family. They didn't have a lot, but her mom taught her that hard work and perseverance would lead to success. Laurie took her first job at 14 and worked her way through high school and college, graduating with honors from St. Catherine University.

**She built two businesses in our community.**

Laurie has lived in Minnetonka for twenty years where she raised her son and daughter. She founded two Minnesota businesses, a telecommunications company and her own consulting firm. She currently serves as a member of the Higher Education Consortium for Urban Affairs.

**Laurie will bring common sense business leadership to St. Paul.**

Laurie's success in business comes from hard work, and she'll do the same in the State Senate. It's time to put the politics aside and work together to focus on the priorities that matter to middle-class Minnesotans. That's why Laurie will fight for a business environment that creates jobs by investing in education and infrastructure, including building the SW Corridor rail line.

Vote Laurie McKendry for State Senate on Tuesday, November 6.

# Laurie McKendry

A job creator who's ready to work for us.

[www.McKendryforSenate.org](http://www.McKendryforSenate.org)



MKY 12\_001

Minnesota Democratic-Farmer-Labor Party  
255 E. Plato Blvd.  
St. Paul, MN 55107

NON-PROFIT ORG.  
U.S. POSTAGE  
PAID  
TPG



# Laurie McKendry

will fight for Eden Prairie and Minnetonka.

This is an independent expenditure, not approved by any candidate, nor is any candidate responsible for it.  
Prepared and paid for by the Minnesota DFL Party, 255 E. Plato Blvd, St. Paul, MN 55107.  
Not authorized by any candidate or candidate's committee.

MKY12\_002

[www.McKendryforSenate.org](http://www.McKendryforSenate.org)



## In Minnesota, *infrastructure* means jobs.

As a successful businesswoman, Laurie knows infrastructure is key to creating jobs and a vibrant business climate. *That's why she'll fight to:*

- Invest in a SW Corridor light rail system for Minnetonka and Eden Prairie.
- Encourage investment in transit-oriented development.
- Rebuild crumbling local roads and bridges.

# Laurie McKendry

A job creator who's ready to work for us.

Vote Laurie McKendry for State Senate on Tuesday, November 6.  
[www.McKendryforSenate.org](http://www.McKendryforSenate.org)



MKY 12\_002

Minnesota Democratic-Farmer-Labor Party  
255 E. Plato Blvd.  
St. Paul, MN 55107

NON-PROFIT  
ORG.  
U.S. POSTAGE  
PAID  
TPG

[www.McKendryforSenate.org](http://www.McKendryforSenate.org)



★★★  
**Laurie McKendry**  
A job creator who's ready to work for us.

Infrastructure doesn't just mean good transportation.

***It means good jobs and strong businesses.***

This is an independent expenditure, not approved by any candidate, nor is any candidate responsible for it. Prepared and paid for by the Minnesota DFL Party, 255 E. Plato Blvd, St. Paul, MN 55107. Not authorized by any candidate or candidate's committee.

MKY12\_003 |  



In Minnesota,  
***infrastructure  
means jobs.***

As a successful businesswoman, Laurie knows infrastructure is key to creating jobs and a good business climate. *That's why she'll fight to:*

- Invest in a SW Corridor light rail system for Minnetonka and Eden Prairie.
- Encourage investment in transit-oriented development.
- Rebuild crumbling local roads and bridges.



**Laurie McKendry**

A job creator who's ready to work for us.

Vote Laurie McKendry for State Senate on Tuesday, November 6.

[www.McKendryforSenate.org](http://www.McKendryforSenate.org)

MKY 12\_003 Side Two





**Their job interview  
starts in the classroom.**

This is an independent expenditure, not approved by any candidate, nor is any candidate responsible for it. Prepared and paid for by the Minnesota DFL Party, 255 E. Plato Blvd, St. Paul, MN 55107. Not authorized by any candidate or candidate's committee.

[www.McKendryforSenate.org](http://www.McKendryforSenate.org)



## Laurie McKendry

will make sure our kids are  
ready for tomorrow's jobs.

***Overcrowded classrooms and outdated technology  
are unacceptable.***

Minnesota used to be a national leader in education, but our elementary school class size ranking has fallen to 47th in the nation<sup>1</sup> and our classroom technology has been graded a D.<sup>2</sup>

***Laurie McKendry has a plan to fix our schools:***

- Restore the \$21 billion cut from Minnesota schools.
- Invest in smaller class sizes so students can get the attention they need to compete.
- Work with businesses to develop and invest in classroom technology that has real world applications.



# Laurie McKendry

A job creator who's ready to work for us.

**Vote Laurie McKendry for State Senate on Tuesday, November 6.**  
[www.McKendryforSenate.org](http://www.McKendryforSenate.org)

Check the Facts: 1 National Center for Education Statistics. 2 2009 Technology Counts State Report.

MKY 12\_004



Like you, I've grown tired of witnessing one failed state legislative session after another. Instead of investing in our future, elected leaders have overseen shutdown and sex scandals—and they've repeatedly punted the ball on important decisions.

Rather than more smoke and mirrors, we need a Legislature committed to honest and responsible budgeting. We need real compromise and a good dose of common sense—not empty rhetoric and politics as usual. If anything, the Legislature should strengthen and grow local businesses, communities and schools—not weigh them down with property taxes.

—Matt Schmit

NON-PROFIT ORG.  
U.S. POSTAGE  
PAID  
TRG

Minnesota Democratic-Farmer-Labor Party  
266 E. Pike Blvd.  
St. Paul, MN 55107

**MATT SCHMIT**  
Building a better Minnesota for the future.  
WWW.SCHMITFORSENATE.COM

This is an independent expenditure, not approved by any candidate, nor is any candidate responsible for it. Prepared and paid for by the Minnesota DFL Party, 266 E. Pike Blvd., St. Paul, MN 55107. Not authorized by any candidate or candidate committee.

MSH12\_001 |

# MATT SCHMIT



**RED WING  
RAISED  
AND READY  
TO LEAD.**

**An expert in 21<sup>st</sup>-century infrastructure, Matt Schmit is exactly what we need.**

VOTE MATT SCHMIT FOR STATE SENATE  
TUESDAY, NOVEMBER 6.  
WWW.SCHMITFORSENATE.COM



## He's ready to lead Minnesota into the future.

### Red Wing raised

Matt Schmit was born and raised in Red Wing, Minnesota. The oldest of three brothers, he is the son of a retired schoolteacher and football coach, Mark Schmit. Matt attended Saint Joseph's Elementary and graduated from Red Wing High.

### Small-business owner

Matt owns a public policy consulting firm, P3 Strategies, focusing primarily on the areas of economic development, community broadband deployment and transportation policy. Creating 21<sup>st</sup>-century infrastructure is his specialty, and he'll make that a priority in St. Paul.

### A plan to move Minnesota forward

- Repair roads, bridges and information infrastructure because it gets more expensive the longer you wait.
- Invest in smaller class sizes and classroom technology by restoring the \$2.1 billion cut from our schools.
- Simplify our tax code, making it easier for business start-ups and entrepreneurs to create jobs here in Minnesota.
- Reinstate the Minnesota Homestead Property Tax Credit for families and small businesses while closing unfair corporate tax loopholes.

**MATT SCHMIT**  
Building a better Minnesota for the future.



Minnesota Democratic-Farmer-Labor Party  
255 E. Plato Blvd.  
St. Paul, MN 55107

NON-PROFIT ORG.  
U.S. POSTAGE  
PAID  
TPG

# MATT SCHMIT

STARTED HIS OWN SUCCESSFUL  
SMALL BUSINESS WITH A PLAN.



MSH12\_002 |  

This is an independent expenditure, not approved by any candidate, nor is any candidate responsible for it.  
Prepared and paid for by the Minnesota DFL Party, 255 E. Plato Blvd, St. Paul, MN 55107.  
Not authorized by any candidate or candidate's committee.

## Now, he's got a plan to help Minnesota's small businesses.



### Matt Schmit's plan for a better Minnesota:

- Educate a world-class workforce by restoring the \$2.1 billion cut from our schools.
- Simplify our tax code, making it easier for business start-ups and entrepreneurs to create jobs here in Minnesota.
- Repair roads, bridges and information infrastructure because it gets more expensive the longer you wait.
- Reinstate the Homestead Property Tax Credit for families and small businesses while closing unfair corporate tax loopholes.



VOTE MATT SCHMIT FOR STATE SENATE  
TUESDAY, NOVEMBER 6.

[www.schmitforsenate.com](http://www.schmitforsenate.com)



Building a better Minnesota *for* the future.

MSH 12\_002

Our small businesses need educated employees,  
fair taxes and infrastructure to grow.

# It's that simple.

This is an independent expenditure, not approved by any candidate, nor is any candidate responsible for it.  
Prepared and paid for by the Minnesota DFL Party, 255 E. Plato Blvd, St. Paul, MN 55107.  
Not authorized by any candidate or candidate's committee.

## Matt Schmit created his own small business and is ready to help Minnesotans do the same.



### Matt Schmit's plan for a better Minnesota:

- Educate a world-class workforce by restoring the \$2.1 billion cut from our schools.
- Simplify our tax code, making it easier for business start-ups and entrepreneurs to create jobs here in Minnesota.
- Repair roads, bridges and information infrastructure because it gets more expensive the longer you wait.
- Reinstate the Minnesota Homestead Tax Credit for property taxpayers while closing unfair corporate tax loopholes.



VOTE MATT SCHMIT FOR STATE SENATE  
TUESDAY, NOVEMBER 6.

[www.schmitforsenate.com](http://www.schmitforsenate.com)



Building a better Minnesota for the future.

MSH 12\_003

Minnesota Democratic-Farmer-Labor Party  
255 E. Plato Blvd.  
St. Paul, MN 55107

MSH12\_004 | 

NON-PROFIT ORG.  
U.S. POSTAGE  
PAID  
TPG

# MATT SCHMIT

will move Minnesota forward with an infrastructure plan to build for tomorrow.

This is an independent expenditure, not approved by any candidate, nor is any candidate responsible for it. Prepared and paid for by the Minnesota DFL Party, 255 E. Plato Blvd, St. Paul, MN 55107. Not authorized by any candidate or candidate's committee.

## Matt Schmit is an infrastructure expert



### with a plan to get Minnesota moving:

- Rebuild roads, bridges, water and sewer systems.
- Invest in information infrastructure for the jobs of tomorrow.
- Prioritize infrastructure repairs because they get more expensive the longer you wait.
- Promote bioenergy research to develop fuels that help our agriculture industry.

VOTE MATT SCHMIT FOR STATE SENATE  
TUESDAY, NOVEMBER 6.

[www.schmitforsenate.com](http://www.schmitforsenate.com)

  
**MATT SCHMIT**  
Building a better Minnesota *for* the future.

MSH 12\_004

Minnesota Democratic-Farmer-Labor Party  
225 E Park Blvd.  
St Paul, MN 55101

Gregory M. Clausen  
D-FL  
State Office Bldg  
St Paul, MN 55155

This campaign advertising material is prepared by our candidate, not by our political party. It is the responsibility of the candidate and not the Minnesota Democratic-Farmer-Labor Party, 225 E Park Blvd, St Paul, MN 55101. It is not endorsed by our political party or its members.



**Principal. Coach. Teacher.**  
**Greg Clausen for State Senate.**  
Our Priorities. Our Choice for State Senate.

As a coach and Principal,  
education has always  
been the priority for  
**Greg Clausen.**



This campaign advertising material is prepared by our candidate, not by our political party. It is the responsibility of the candidate and not the Minnesota Democratic-Farmer-Labor Party, 225 E Park Blvd, St Paul, MN 55101. It is not endorsed by our political party or its members.

# Greg Clausen.

**Ready to make  
education the  
priority in the  
State Senate.**

**Greg understands firsthand the  
challenges facing our public schools.**

**And he's ready to do something  
to address them.**

**Greg Clausen was Principal at Rosemount  
High School for 14 years and coached and  
taught in Apple Valley before that.**



**Greg Clausen is angry that Minnesota's public schools – once among  
the best in the nation – are falling behind.**

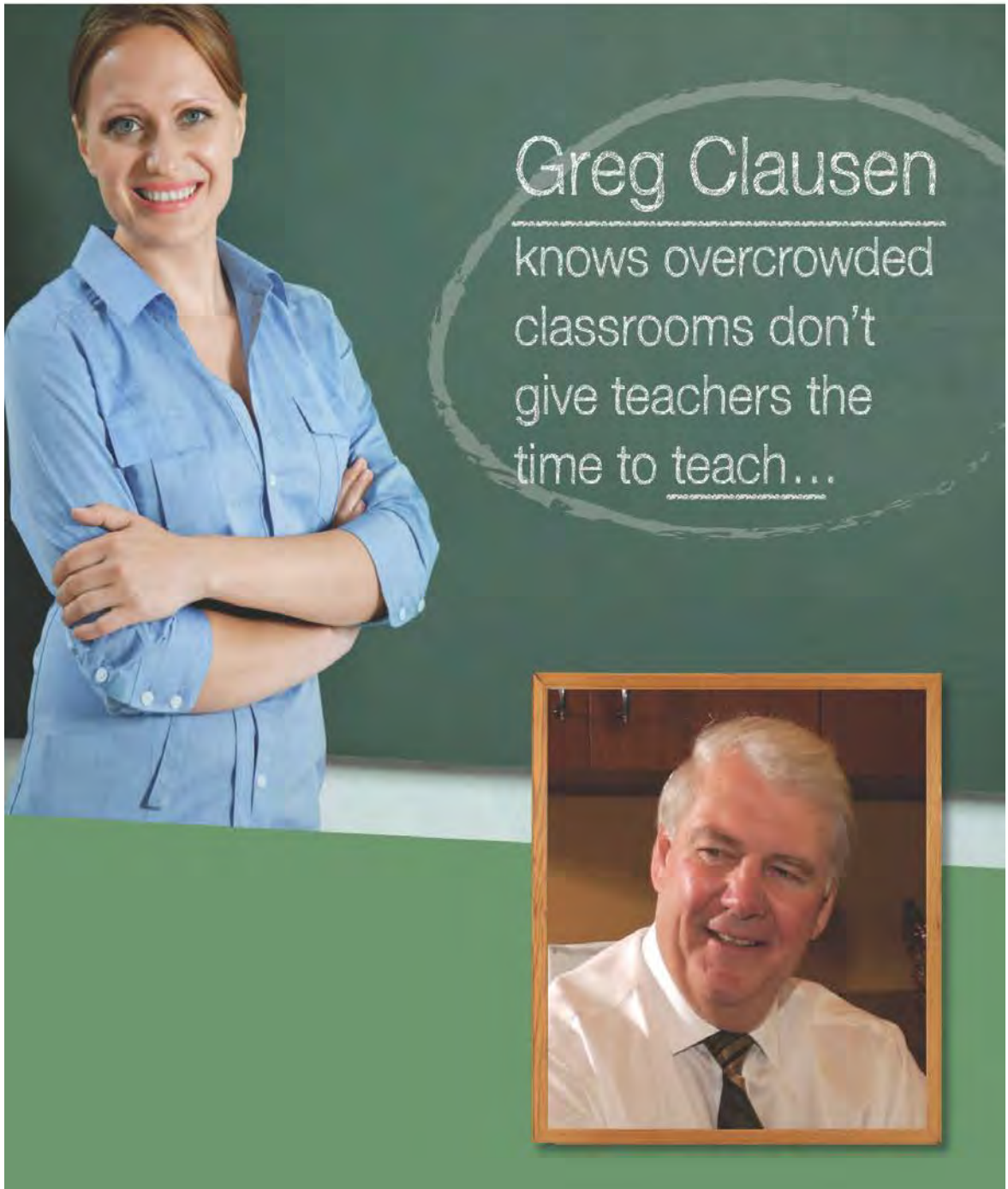
**Overcrowded classrooms, fewer experienced teacher and  
outdated technology are holding our students back from  
realizing their full potential.**

**Greg Clausen will work to restore over \$58 million in state funding  
cut from Rosemount-Apple Valley-Eagan schools—that's \$3,032 cut  
from each of our students!** (source: Minnesota Department of Education)

**Vote for Greg Clausen for State Senate.** Our Priorities. Our Choice for State Senate.

GC Priority

This is an independent expenditure, not approved by any candidate, nor is any candidate responsible for it. Prepared and paid for by the Minnesota DFL Party, 255 E. Plato Blvd, St. Paul, MN 55107. Not authorized by any candidate or candidate's committee.



GC Time to Teach Side One

Or students the best chance to learn.  
**Greg Clausen** will ease school  
overcrowding and unpack  
our kids' potential.



**Former Principal and Coach Greg Clausen knows overcrowded classes aren't good for our children's education.**

**That's why Greg Clausen will push to reduce classroom overcrowding in our public elementary schools.** In just a few years, Minnesota has slid to 47<sup>th</sup> in the nation in elementary school size. Overcrowded classrooms are tough on teachers and hard on students. Minnesota has to do better.

**Greg Clausen will restore the \$58 million cut away from Apple Valley-Rosemount-Eagan schools to keep experienced teachers in the classroom.** Nothing matters more to a student's success than a great teacher. But budget cuts forced our schools to borrow millions of dollars and let experienced teachers go.

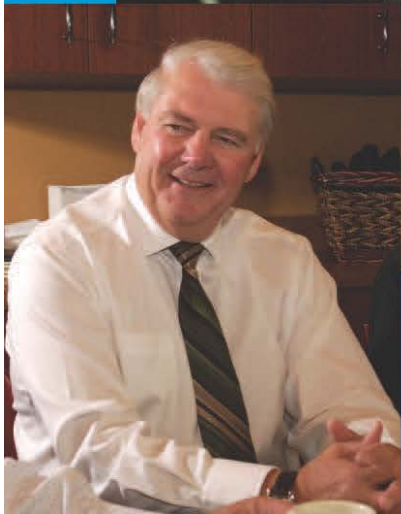


**Vote for Greg Clausen for State Senate.**  
Our Priorities. Our Choice for State Senate.

GC Time to Teach  
Side Two



**On technology, Minnesota's schools are getting a "D."**



**Greg Clausen**  
knows they need an **upgrade.**

GC Upgrade

## **Greg Clausen will make sure our public schools have access to state-of-the art technology for students.**

**As a teacher, coach and Principal, Greg Clausen knows our schools need the right equipment and the right teachers to prepare kids well. That's why Clausen knows we need to upgrade our public schools' technological capacity—getting a grade “D” just won't cut it.**

**As our new State Senate, Greg Clausen will work to restore the \$58 million cut from local schools so they can keep experienced teachers in the classroom. Nothing matters more to student success than a great teacher. But budget cuts are forcing too many schools to let some of our best, more experienced teachers go.**



**Greg Clausen will push to reduce classroom overcrowding in our public elementary schools. In just a few years, Minnesota has slide to 47<sup>th</sup> in the nation in elementary school size.**

## **Vote for Greg Clausen for State Senate. Our Priorities. Our Choice for State Senate.**

This is an independent expenditure, not approved by any candidate, nor is any candidate responsible for it. Prepared and paid for by the Minnesota DFL Party, 255 E. Plato Blvd., St. Paul, MN 55107. Not authorized by any candidate or candidate's committee.

**GC Upgrade  
Side Two**

**What comes first?**



**Minnesota  
kids**

**OR OUT-OF-STATE  
CORPORATIONS?**

Minnesota Democratic-Farmer-Labor Party  
255 E. Plato Blvd.  
St. Paul, MN 55107

Nonprofit Org.  
U.S. Postage  
**PAID**  
Twin Cities, MN  
Permit No. 2647

This is an independent expenditure, not approved by any candidate, nor is any candidate responsible for it. Prepared and paid for by the Minnesota DFL Party, 255 E. Plato Blvd, St. Paul, MN 55107. Not authorized by any candidate or candidate's committee.

## STATE SENATOR PAM WOLF ANSWERED: OUT-OF-STATE CORPORATIONS.

**Pam Wolf couldn't find money in the budget to fully fund education.** In fact, Pam Wolf cut \$82 million from Anoka-Hennepin schools—a cut of more than \$3,000 per student.\*

**But what did Wolf find the money for? Huge tax breaks for out-of-state corporations.\***

Pam Wolf's priorities just don't pass the test.  
**State Senator Pam Wolf put tax breaks for out-of-state corporations ahead of our kids.**

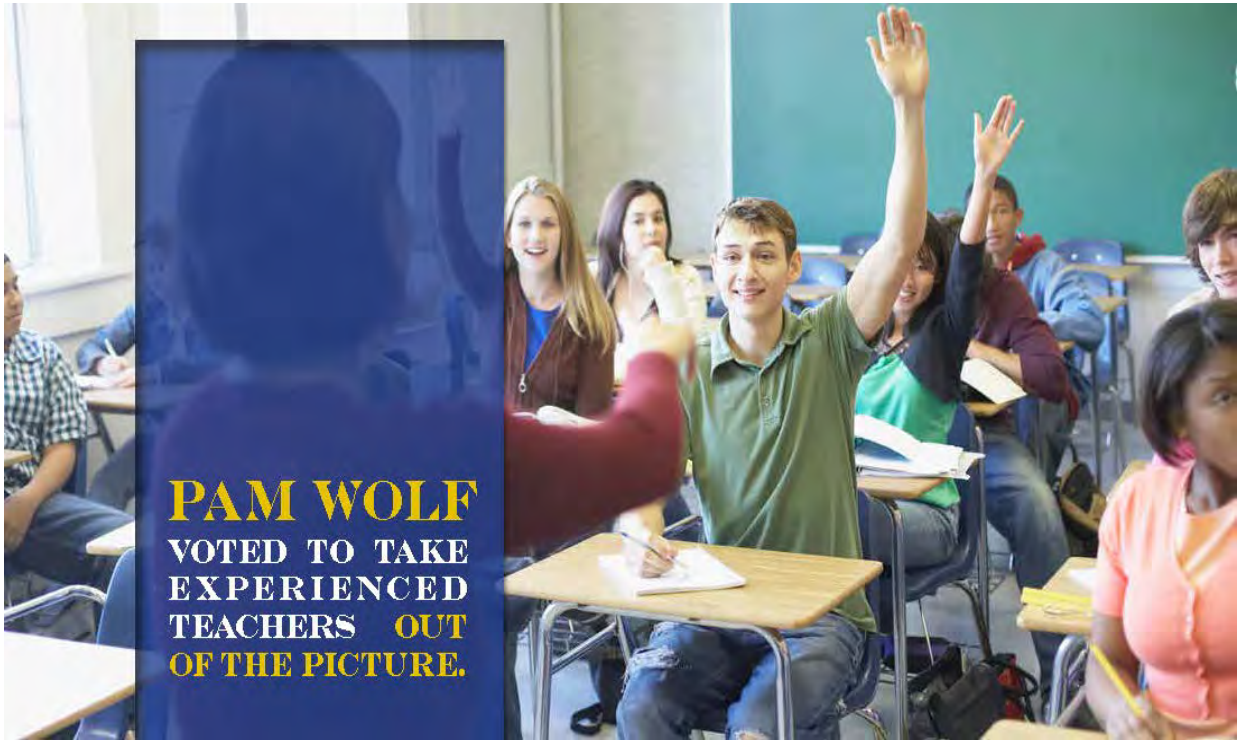
\*Source: Minnesota Department of Education



**PAM WOLF?  
SHE'S FAILING US.  
WE DESERVE BETTER.**

**Vote for Alice Johnson.**  
She'll put Minnesota first

AJ Kids/Corps  
Side Two



AJ Fewer

Minnesota Democratic-Farmer-Labor Party  
255 E. Plato Blvd.  
St. Paul, MN 55107

Nonprofit Org.  
U.S. Postage  
**PAID**  
Twin Cities, MN  
Permit No. 2647

This is an independent expenditure, not approved by any candidate, nor is any candidate responsible for it. Prepared and paid for by the Minnesota DFL Party, 255 E. Plato Blvd, St. Paul, MN 55107. Not authorized by any candidate or candidate's committee.

## THANKS TO PAM WOLF, ELEMENTARY SCHOOLS ARE GETTING MORE OVERCROWDED.

Pam Wolf voted to cut \$82 million from Anoka-Hennepin public schools – that's more than \$3000 per student!\* These cuts forced schools to borrow millions and increase class sizes.

In just a few short years, Minnesota has slid to 47<sup>th</sup> in the nation for elementary class size.\* Overcrowded classrooms mean less individualized instruction for students.


State Senator Pam Wolf is failing our schools.  
We deserve better.

\* Source: Minnesota Department of Education



Vote for **Alice Johnson** for State Senate.  
She'll put Minnesota first

AJ Fewer  
Side Two



In just a few years,  
Minnesota schools  
***slid to 47<sup>th</sup>***  
in the nation

AJ Slid

**As a retired teacher, Alice Johnson knows we can't keep shortchanging our schools.**

Minnesota Democratic-Farmer-Labor Party  
255 E. Plato Blvd.  
St. Paul, MN 55107

Nonprofit Org.  
U.S. Postage  
**PAID**  
Twin Cities, MN  
Permit No. 2647

**Alice Johnson is worried that budget cuts have driven our state to the bottom of the rankings** nationally for elementary school class sizes—we're now 47<sup>th</sup> in the nation.  
(source: National Center for Education Statistics)

We're packing kids into overcrowded classrooms where they can't get the individualized attention they need to succeed.



## **Alice Johnson has a better plan for our schools**

- **Restore the state funding cut by the legislature that forced districts to borrow money and increase taxes on property owners.**
- **Reduce class sizes so our teachers can teach and kids can learn.**
- **Work to lower in-state college tuition for middle-class families.**

**Vote for Alice Johnson for State Senate.  
She'll put Minnesota first.**

This is an independent expenditure, not approved by any candidate, nor is any candidate responsible for it. Prepared and paid for by the Minnesota DFL Party, 255 E. Plato Blvd, St. Paul, MN 55107. Not authorized by any candidate or candidate's committee.

AJ Slid  
Side Two



Minnesota Democratic-Farmer-Labor Party  
255 E. Plato Blvd.  
St. Paul, MN 55107

Norgroff Org.  
U.S. Postage  
PAID  
Twin Cities, MN  
Permit No. 2647

**Alice Johnson**  
knows how to unlock  
our children's potential.



**A state senator who won't let anyone  
lock them out of a great education.**

This is an independent expenditure, not approved by any candidate, nor is any candidate responsible for it. Prepared and paid for by the Minnesota DFL Party, 255 E. Plato Blvd., St. Paul, MN 55107. Not authorized by any candidate or candidate's committee.

AJ Unlock

# Alice Johnson understands that education is the key to Minnesota's economic recovery.

## We're losing great, experienced teachers.

The Republicans in charge of the state legislature have shifted money away from school districts and left administrators scrambling to fill in the gaps and forced property owners to pay more.

## Alice Johnson knows there is a better way.



**In the 1990s, Alice Johnson worked with Governor Ventura, Republicans and Democrats alike to balance our state's budget the right way.**

Alice made sure Minnesota balanced the budget without shortchanging our schools or burdening property owners with higher taxes.



**Vote for Alice Johnson. The choice is clear. Only Alice Johnson will do what's right for Minnesota.**

AJ Unlock  
Side Two

REMEMBER WHEN  
**COMPROMISE**  
WASN'T A DIRTY  
WORD?

**ALICE JOHNSON**  
REMEMBERS WHEN "COMPROMISE"  
AND "COOPERATION" WEREN'T  
DIRTY WORDS.



We do not discriminate on the basis of race, sex, religion, or ethnicity. We are not responsible for a program and post for  
by the Minnesota DFL Party, 255 E. Fifth Blvd., St. Paul, MN 55107. Not affiliated with any candidate or candidate's committee.

**Alice Johnson does.**



She's ready to put  
Minnesota first again.

**Working together.**  
Focusing on the right solutions for Minnesota  
-not petty political fights. That's how things  
used to work in St. Paul.

Alice Johnson knows, because Alice Johnson was there.

- ▶ As a State Representative, Alice Johnson worked with Governor Ventura, Republicans and Democrats to balance our state's budget and cut taxes the right way.
- ▶ As our State Senator, Alice Johnson will stop the cuts to our schools that are jeopardizing our kids' future and raising our property taxes.

**Alice Johnson for State Senate.**  
Always putting Minnesota First.

AJ Dirty Word

## Who would make it a crime to look for cures for Alzheimer's or diabetes?

State Senator Ted Lillie



This is an independent expenditure, not approved by any candidate nor is any candidate responsible for it. Prepared and paid for by the Minnesota DFL Party, 255 E. Plato Blvd, St. Paul, MN 55107. Not authorized by any candidate or candidate's committee.

## Ted Lillie isn't the common-sense leader we expected.

Minnesota's thriving biotech industry is one of the strongest engines fueling our state's economic recovery.

**But the extreme views of State Senator Ted Lillie threaten that.**

**State Senator Ted Lillie was willing to put his extreme position ahead of biotech research and jeopardize the 250,000 Minnesota jobs in this industry.\***

**Ted Lillie voted to make it a crime to do medical research using stem cells.** Stem cell research at institutions like University of Minnesota and the Mayo Clinic offer some of the best chances we have to make breakthroughs in Alzheimers' and diabetes treatment.\*

**But Ted Lille was willing to make life-saving research a criminal activity.**

**The closer you look, it's clear:**

**State Senator Ted Lillie is too extreme for us.**

Vote for  
**SUSAN  
Kent**  
FOR STATE SENATE



\*Source: Senate File 924, 3/29/11; Senate File 760 3/31/11

SK Crime

Minnesota Democratic-Farmer-Labor Party  
255 E. Plato Blvd.  
St. Paul, MN 55107

Nonprofit Org.  
U.S. Postage  
PAID  
Twin Cities, MN  
Permit No. 2647

This is an independent expenditure, not approved by any candidate, nor is any candidate responsible for it. Prepared and paid for by the Minnesota DFL Party, 255 E. Plato Blvd, St. Paul, MN 55107. Not authorized by any candidate or candidate's committee.



**Why are 7 out of 10  
Minnesota property  
owners being hit  
with bigger tax bills?**

SK Hit

# Ted Lillie **ELIMINATED** the Homestead Property Tax Credit.



**Why are 7 out of 10 Minnesota property owners being hit with a bigger property tax bill this October?**

**Because of State Senator Ted Lillie.**

Lillie led the charge to eliminate your Minnesota Homestead Credit that kept property taxes affordable for thousands in our state.

Lillie voted to increase property taxes for people like us while working to completely end property taxes for corporations giving them a \$3.5 billion dollar tax break.

(Sources: HF2337; HF 42, 4/4/11; HF 42, 5/19/11)

**We have a better choice.  
Susan Kent for State Senate.**

Susan knows that property owners and schools can't afford to keep paying for tax giveaways to out-of-state companies.

Susan will work to develop a plan to restore the millions cut from local schools and reinstate the Homestead Property Tax Credit for struggling families.



**SUSAN  
Kent**  
FOR STATE SENATE

SK Hit  
Side Two



**A ROAD.**



**A BRIDGE.**



**A SCHOOL  
AT A TIME.**

**LYLE  
KOENEN**  
will invest in  
Minnesota jobs.

LK Build

Minnesota Democratic-Farmer-Labor Party  
255 E. Plato Blvd.  
St. Paul, MN 55107

Nonprofit Org.  
U.S. Postage  
PAID  
Twin Cities, MN  
Permit No. 2647



## **LYLE KOENEN.** Ready to pave the way to more jobs and a better future for Minnesota.

Lyle Koenen knows we need jobs and we need them now. Minnesota also has pressing infrastructure needs to repave old roads, repair aging bridges and update old, inefficient school buildings.

Lyle knows we can't keep putting off road and bridge repairs—they'll only get more dangerous and expensive to fix in the future.

Lyle Koenen understands the road to economic recovery will be long, but if we make the right investments in our communities and our schools, we will be paving the way to increased employment, a better climate for business and a brighter future for our kids.



**VOTE FOR LYLE KOENEN FOR STATE SENATE.**  
*He's ready to build a better Minnesota.*

This is an independent expenditure, not approved by any candidate, nor is any candidate responsible for it. Prepared and paid for by the Minnesota DFL Party, 255 E. Plato Blvd., St. Paul, MN 55107. Not authorized by any candidate or candidate's committee.

LK Build  
Side Two





As a truck driver,  
**Lyle Koenen**  
 knows rebuilding roads  
 and bridges would help  
 get our economy in gear.



Minnesota Democratic-Farm-Labor Party  
 255 E. Plato Blvd.  
 St. Paul, MN 55107

Nonprofit Org.  
 U.S. Postage  
 PAID  
 Twin Cities, MN  
 Permit No. 2647

**Lyle Koenen.**  
 Ready to get people back to work.

Lyle Koenen knows we can't afford to keep putting off needed road and bridge repairs—they'll only get more dangerous and expensive the longer we delay.

Lyle Koenen knows we need modern infrastructure to attract new business and investment. We need good roads, safe bridges and the technological capacity to compete.

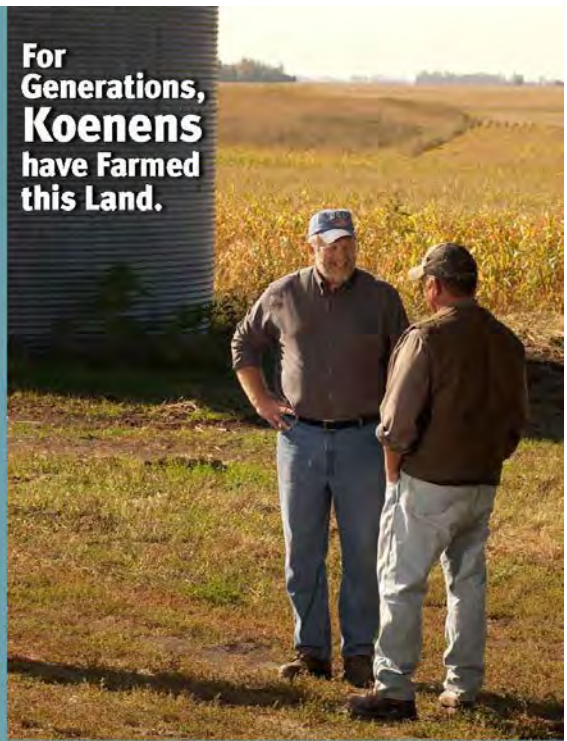
Lyle Koenen believes by investing in infrastructure now, we can jumpstart our economic recovery, get more of our neighbors back to work and get Minnesota back on track.

**VOTE FOR LYLE KOENEN FOR STATE SENATE.**  
*He's ready to build a better Minnesota.*

This is an independent expenditure, not approved by any candidate, nor is any candidate responsible for it. Prepared and paid for by the Minnesota DFL Party, 255 E. Plato Blvd., St. Paul, MN 55107. Not authorized by any candidate or candidate committee.

LK Gear

**For Generations, Koenens have Farmed this Land.**



**Lyle Koenen has the right ideas and the right priorities to Build a Better Minnesota. But? Senator Joe Gimse. He isn't working for us.**

	Lyle Koenen	Joe Gimse
1. Will restore millions in cuts to local schools	<b>YES</b>	<b>NO</b>
2. Will reinstate the Homestead Property Tax Credit to cut property taxes for 7 in 10 Minnesotans.	<b>YES</b>	<b>NO</b>
3. Will invest in road, bridge and sewer repairs to get Minnesota working again	<b>YES</b>	<b>NO</b>
4. Will put middle-class families first, not out-of-state corporations or richest Minnesotans	<b>YES</b>	<b>NO</b>



**Vote for Lyle Koenen for State Senate. Ready to Build a Better Minnesota.**

**No one will fight harder for family farms and our rural economy than Lyle Koenen.**

Lyle Koenen's roots run deep in Kandiyohi County. He'll never forget where he came from or what matters to us.

Vote for Lyle Koenen for State Senate. He's ready to build a better Minnesota.



**Lyle Koenen will help family farms make it in this tough economy.** Koenen has led efforts to keep local control of livestock site decisions and made it easier for family farmers to keep their land in the family.

**Lyle Koenen will work to rebuild roads and bridges to get people back to work.** Lyle knows we can't keep putting off needed repairs—they only get more expensive the longer we wait—and investing in infrastructure

will not only create jobs, it helps make Minnesota more attractive to businesses looking to relocate here.

**Lyle Koenen will make sure we repay the money the state legislature cut from public education.** Koenen knows it was wrong to have forced local schooldistricts to borrow millions and raise property taxes. Lyle will ensure local schools districts get their fair share of state funding again.

**Vote for Lyle Koenen for State Senate. Ready to Build a Better Minnesota.**

